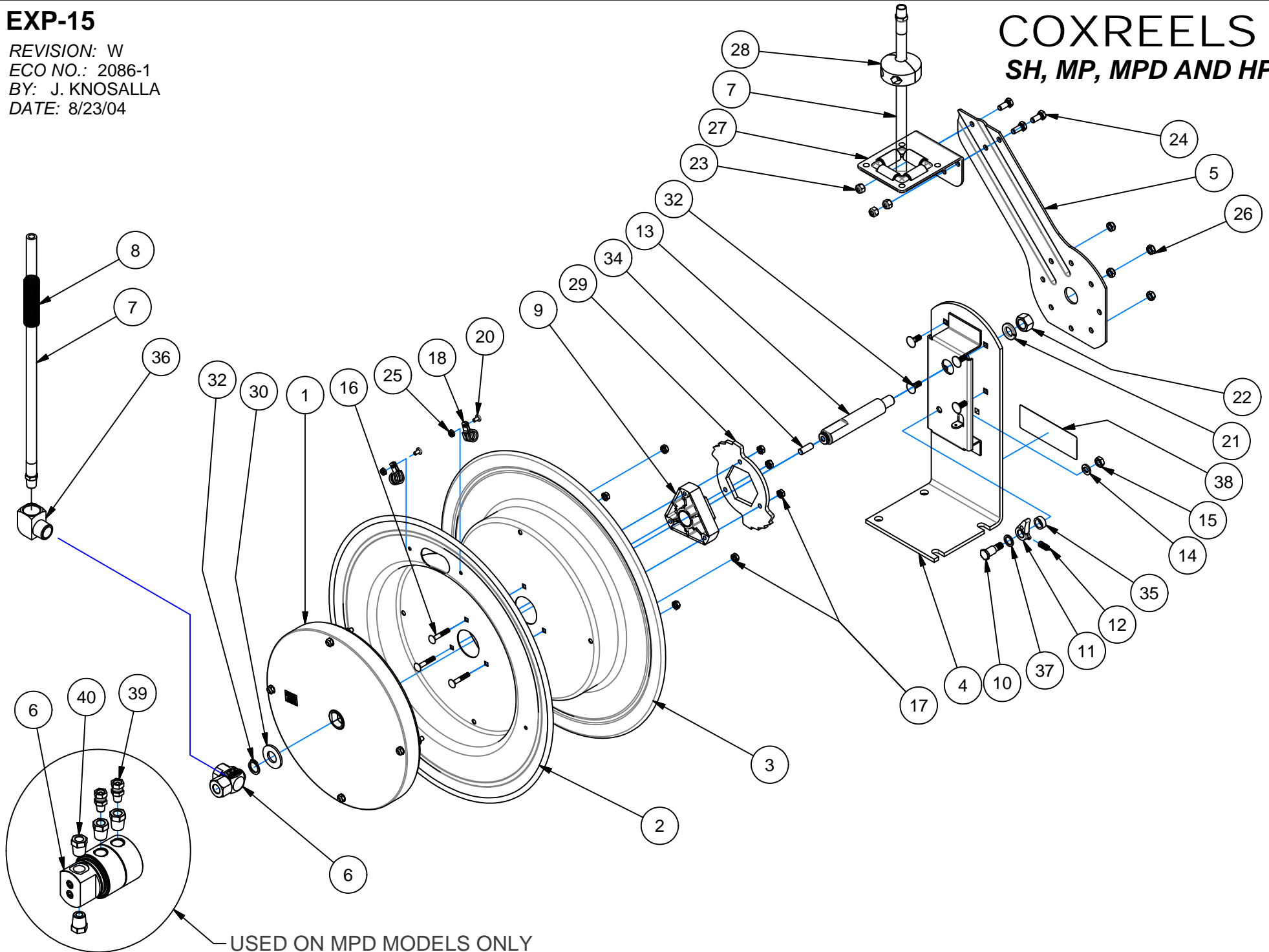


EXP-15

REVISION: W
ECO NO.: 2086-1
BY: J. KNOSALLA
DATE: 8/23/04

COXREELS SH, MP, MPD AND HP



USED ON MPD MODELS ONLY

COMMON PARTS TO ALL SERIES SH, MP, MPD AND HP REELS

ITEM NO.	PART NO.	DESCRIPTION	QTY REQ'D
9	1776-3	ASSY., HUB BEARING	1
10	1620	BOLT, SHOULDER, 1/2"x1 1/2"	1
12	274-1-SS	SPRING, DOG	1
14	437	WASHER, LOCK, 3/8"	1
15	184	NUT, JAM, 3/8-16	1
16	1953	CARRIAGE BOLT, 1/4-20 x 1.5"	3
17	125	NUT, KEPS, 1/4-20	7
20	245	BOLT, 10-32 x 3/8	2
21	438	WASHER, LOCK, 5/8"	1
22	3584	NUT, HEX, 5/8-11	1
23	111	NUT, LOCK, 5/16--18	3
24	312	BOLT, 5/16-18	3
25	130	NUT, KEPS, 10-32	2

ITEM NO.	PART NO.	DESCRIPTION	QTY REQ'D
26	111-1	NUT, LOCK 5/16-18, LOW PROF	4
29	1924	LOCKING RING	1
30	1755-1	WASHER, SPACER	1
31	1753	RETAINING RING (5160-75)	1
32	10220-75	BOLT, CARRIAGE, 5/16-18x3/4"	4
34	10235-SS	SETSCREW, 3/8-16x1"-SS	1
35	6440-SS	WASHER, SPACER	1
37	6441-1	WASHER, SPACER	1
38	10925-5	LABEL	1

ITEM NUMBER

MODEL NO.	1	2	3	4	5	6	* 7	* 7	* 7	* 8	11	13	18	27	* 28	36	39	40
	SPRING	DRUM	DRUM	BASE	ARM GD	SWIVEL	HOSE (STD)	HOSE (-OG)	HOSE (-RH)	HOSE GRD	CAM LK	AXLE	CLAMP (2)	ROLLER BRKT	BALL STOP	ELBOW	ADAPTER	BUSHING
SH-N-160	690-3	1703	1702	1743-2	1732	1969	5150-60	5121-60	3870-60	237-1	640-1-SS	1793	2169	1728-1	131	-	-	-
SH-N-350	690-2	1703	1702	1743-2	1732	1935	5153-50	5101-50	5045-50	237-1	640-1-SS	1793	381	1728-1	131-3	-	-	-
SH-N-360	646	1703	1702	1743-2	1732	1935	5153-60	5101-60	5045-60	237-1	640-1-SS	1793	381	1728-1	131-3	-	-	-
SH-N-375	698-1	1705	1704	1744-2	1733	1935	5153-75	5101-75	5045-75	237-1	640-1-SS	1793	381	1829-2	131-3	-	-	-
SH-N-3100	698-2	1705	1704	1744-2	1733	1935	5153-100	5101-100	5045-100	237-1	640-1-SS	1793	381	1829-2	131-3	-	-	-
SH-N-435	690-1	1703	1702	1743-2	1732	439	5154-35	5131-35	5066-35	398-1	640-1-SS	1793	383	1728-1	131-4	-	-	-
SH-N-440	691-2	1703	1702	1743-2	1732	439	5154-40	5131-40	5066-40	398-1	640-1-SS	1793	383	1728-1	131-4	-	-	-
SH-N-450	691-3	1703	1702	1743-2	1732	439	5154-50	5131-50	5066-50	398-1	640-1-SS	1793	383	1728-1	131-4	-	-	-
SH-N-475	692-2	1705	1704	1744-2	1733	439	5154-75	5131-75	5066-75	398-1	640-1-SS	1794	383	1829-2	131-4	-	-	-
SH-N-4100	656	1705	1704	1744-2	1733	439	5154-100	5131-100	5066-100	398-1	640-1-SS	1794	383	1829-2	131-4	-	-	-
SH-N-525	691-1	1703	1702	1743-2	1732	426	5155-25	5163-25	5091-25	398-1	640-1-SS	1793	384	1728-1	430	385	-	-
SHF-N-525	691-1	1703-1	1702	1743-2	1732	426	5097-25	-	-	398-1	640-1-BR	1793	384	1728-1	430	385	-	-
SH-N-535	691-1	1703	1702	1743-2	1732	426	5155-35	5163-35	5091-35	398-1	640-1-SS	1793	384	1728-1	430	385	-	-
SH-N-550	692-1	1705	1704	1744-2	1733	426	5155-50	5163-50	5091-50	398-1	640-1-SS	1794	384	1829-2	430	385	-	-

MODEL NO.	1	2	3	4	5	6	* 7	* 8	8A	11	13	18	27	* 28	36	39	40
	SPRING	DRUM	DRUM	BASE	ARM GD	SWIVEL	HOSE (STD)	HOSE GRD	HOSE GRD	CAM LK	AXLE	CLAMP (2)	ROLLER BRKT	BALL STOP	ELBOW	ADAPTER (2)	BUSHING
MPDL-N-150	670	1703	1702	1743-2	1732	7516	-	-	7460-8	640-1-SS	1794	383	1829-2	-	-	816	7540-1 (4)
MPD-N-330	670	1703-1	1702	1743-2	1732	7516	5225-30	-	7460-8	640-1-SS	1794	384	1829-2	635	-	815	7540 (2)
MPD-N-430	670	1703-1	1702	1743-2	1732	7516	5257-30	-	7460-8	640-1-SS	1794	397	1829-2	635	-	814	-
MP-N-340	646	1703	1702	1743-2	1732	1935	5224-40	237-1	-	640-1-SS	1793	381	1728-1	131-3	-	-	-
MP-N-350	646	1703	1702	1743-2	1732	1935	5224-50	237-1	-	640-1-SS	1793	381	1728-1	131-3	-	-	-
MP-N-435	691-2	1703	1702	1743-2	1732	439	5256-35	398-1	-	640-1-SS	1793	383	1728-1	131-4	-	-	-
MP-N-440	691-2	1703	1702	1743-2	1732	439	5256-40	398-1	-	640-1-SS	1793	383	1728-1	131-4	-	-	-
MP-N-450	696-1	1703	1702	1743-2	1732	439	5256-50	398-1	-	640-1-SS	1794	383	1728-1	131-4	-	-	-
MP-N-525	691-2	1703	1702	1743-2	1732	426	5290-25	398-1	-	640-1-SS	1793	387	1728-1	430	385	-	-
MP-N-535	699-1	1703	1702	1743-2	1732	426	5290-35	398-1	-	640-1-SS	1793	387	1728-1	430	385	-	-

MODEL NO.	1	2	3	4	5	6	* 7	* 8	11	13	18	27	* 28	36	39	40
	SPRING	DRUM	DRUM	BASE	ARM GD	SWIVEL	HOSE (STD)	HOSE GRD	CAM LK	AXLE	CLAMP (2)	ROLLER BRKT	BALL STOP	ELBOW	ADAPTER	BUSHING
HP-N-140	646	1703	1702	1743-2	1732	499	5304-40	237-1	640-1-SS	1793	115	1728-1	131	-	-	-
HP-N-150	646	1703	1702	1743-2	1732	499	5304-50	237-1	640-1-SS	1793	115	1728-1	131	-	-	-
HP-N-160	699-2	1703	1702	1743-2	1732	499	5304-60	237-1	640-1-SS	1793	115	1728-1	131	-	-	-
HP-N-335	691-3	1703	1702	1743-2	1732	521	5336-35	237-1	640-1-SS	1793	613	1728-1	131-3	-	-	-
HP-N-340	699-1	1703	1702	1743-2	1732	521	5336-40	237-1	640-1-SS	1793	613	1728-1	131-3	-	-	-
HP-N-350	696-1	1703	1702	1743-2	1732	521	5336-50	237-1	640-1-SS	1794	613	1728-1	131-3	-	-	-

* ON "LESS HOSE" MODELS (SHL-/MPL-/HPL-) EXCLUDE ITEMS #7, #8, AND #28.

NOTE: MODELS SUPPLIED WITH "STANDARD" HOSE UNLESS SUFFIXED WITH "-OG" OR "-RH". USE HOSE NUMBERS AS NOTED ABOVE.

REEL ASSEMBLY REPAIR R100 (LATCHOUT REMOVAL), R101 (LOCKING RING PLACEMENT), R112 (TIGHTENING AND TORQUING)