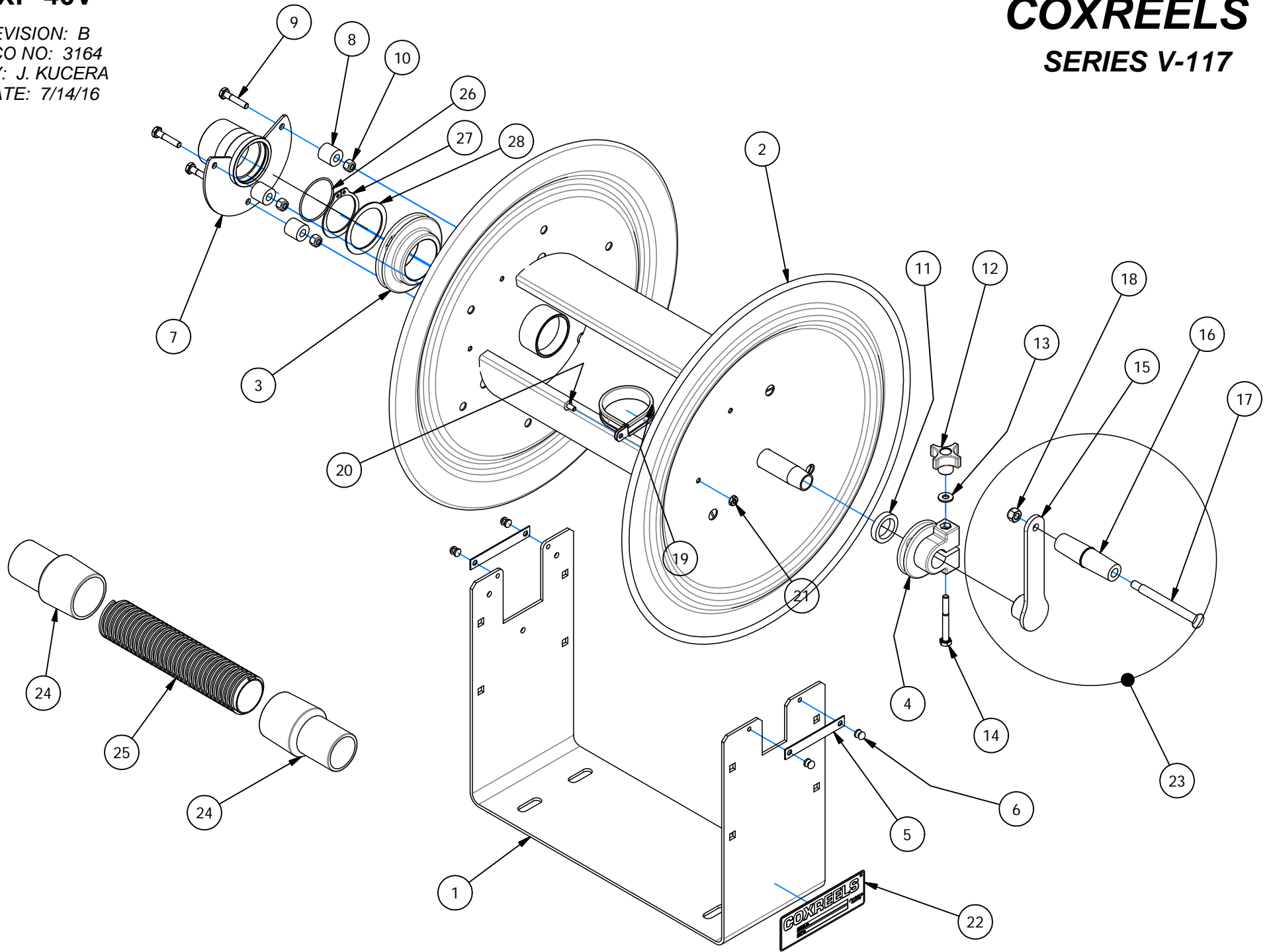


# EXP-40V

REVISION: B  
ECO NO: 3164  
BY: J. KUCERA  
DATE: 7/14/16

# COXREELS SERIES V-117



## COMMON PARTS TO VACUUM CHALLENGER REELS

ASSY. ITEM NO.	DETAIL ITEM NO.	PART NO.	DESCRIPTION	V-117-850	V-117H-835	V-117H-850
	1	8804-13.5	FRAME, "U", CHALLENGER	1	1	1
				-	-	-
	2	8810-13.5	DRUM ASSEMBLY	1	1	1
				-	-	-
	3	8552-1	BEARING, EPDM, 1.875" ID	1	1	1
	4	6329-1-1	BEARING, EPDM, .877" ID, CRANK SIDE	1	1	1
	5	15711-1	PLATE, KEEPER, BEARING	2	2	2
	6	7105	RIVET, POP, 3/16	4	4	4
	7	8806	FLANGE, HOSE	1	1	1
	8	16017-1	SPACER, DELRIN, 0.72" LG	3	3	3
	9	141	BOLT, HEX, 1/4-20 X 1-1/4"	3	3	3
	10	3859	NUT, LOCK, 1/4-20	3	3	3
	11	7145	SPACER, PVC, 0.25"	1	1	1
	12	15719	KNOB, BLACK, PHENOLIC	1	1	1
13	688	WASHER, FLAT, 1/4"	1	1	1	
14	7146	BOLT, HEX, 1/4-20 X 2-1/4"	1	1	1	
23		7272-1	HAND CRANK ASSEMBLY	1	1	1
	15	7107	ARM, CRANK, 100 SERIES	1*	1*	1*
	16	6333	HANDLE, CRANK, PLASTIC	1*	1*	1*
	17	1621	BOLT, SHOULDER, 5/16-18	1*	1*	1*
	18	111	NUT, LOCK, 5/16-18	1*	1*	1*
	19	399	CLAMP, HOSE, #32	1	1	1
	20	245	SCREW, TRUSS HD, 10-32 X 3/8"	1	1	1
	21	130	NUT, KEPS, 10-32	1	1	1
	22	10925-5	NAMEPLATE, PRODUCT, STD DECAL	1	1	1
	24	9070	1.5" HOSE CUFF, VACUUM, SLIP X THREADED	-	2	2
	25A	9069-35	1.5" VACUUM HOSE 35'	-	1	-
	25B	9069-50	1.5" VACUUM HOSE 50'	-	-	1
	26	9109	ORING: 1-7/8 ID, 2 OD, NITRILE	1	1	1
	27	20252	RING: RETAINING, 5100-187	1	1	1
	28	8960	WASHER, BEARING	1	1	1

\* SHOWN FOR REFERENCE. INCLUDED WITH HAND CRANK ASSEMBLY.

REVISION: B

ECO: 3164

DATE: 07/14/16

NAME: JGK