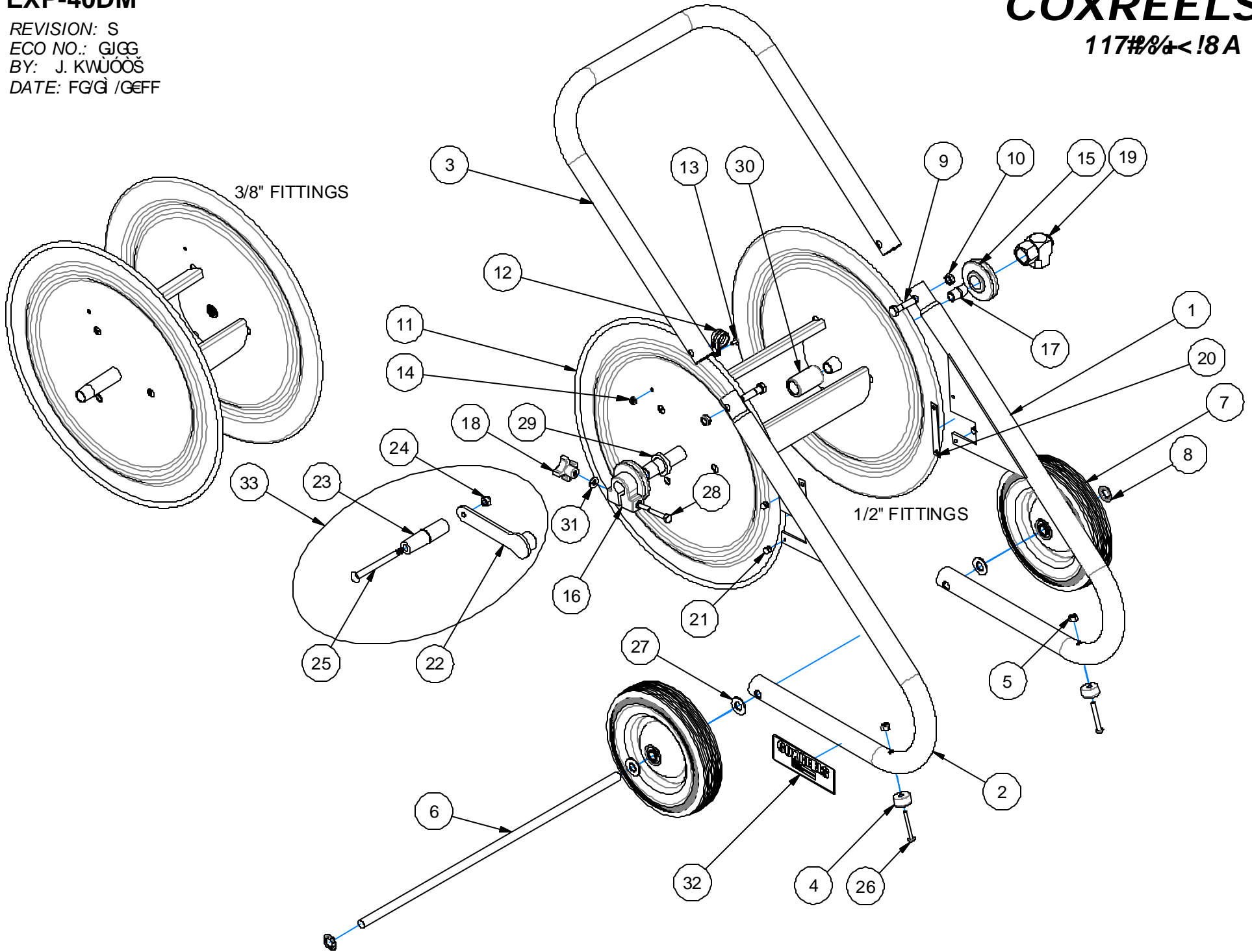


EXP-40DM

REVISION: S
ECO NO.: GJGG
BY: J. KWUÓÓŠ
DATE: FGĜ /GĖFF

COXREELS

117# $\frac{3}{4}$ " < 18 A



Common Parts to all Dolly Mount Challenger Reels

ASSY. ITEM NO.	DETAIL ITEM NO.	PART NO.	DESCRIPTION	117-3-200-DM	117-4-225-DM	117H-3-200-DM	117H-4-225-DM
	1	15707-L	FRAME, DOLLY, LOWER - LH	1	1	1	1
	2	15707-R	FRAME, DOLLY, LOWER - RH	1	1	1	1
	3	15708-8	HANDLE, CHALLENGER DOLLY, 8"	1	-	1	-
		15708-12.5	HANDLE, CHALLENGER DOLLY, 12.5"	-	1	-	1
	4	15710	BUMPER	2	2	2	2
	5	3859	LOCK NUT, ¼-20	2	2	2	2
	6	15709-1	AXLE, ½" X 17"	1	-	1	-
		15709-2	AXLE, ½" X 21.5"	-	1	-	1
	7	15541	WHEEL	2	2	2	2
	8	20692	PUSH NUT, ½"	2	2	2	2
	9	481	BOLT, HEX HD, 3/8-16 X 1-½	2	2	2	2
	10	435-1	NUT, LOW PROFILE, NYLON, 3/8-16	2	2	2	2
	11	7118-2-8	DRUM ASSY, 3/8" NPT, 5.5" X 8"W	1	-	1	-
		7108-2-12.5	DRUM ASSY, 1/2" NPT, 5.5" X 12.5"W	-	1	-	1
	12	381	HOSE, CLAMP, #10	1	-	1	-
		383	HOSE, CLAMP, #12	-	1	-	1
	13	245	SCREW, TRUSS HD, 10-32 X 3/8"	1	1	1	1
	14	130	NUT, KEPS, 10-32	1	1	1	1
	15	6328-1-1	BEARING, EPDM, .877 ID, PLUMBING SIDE	1	1	1	1
	16	6329-1-1	BEARING, EPDM, .877" ID, CRANK SIDE	1	1	1	1
	17	7115	NIPPLE, 3/8-18 X CLOSE SCH 80	1	-	1	-
	18	15719	KNOB, BLACK, PHENOLIC	1	1	1	1
	19	1935	SWIVEL, 3/8" NPT, CARBOXYLATED	1	-	1	-
		439	SWIVEL, 1/2" NPT, CARBOXYLATED	-	1	-	1
	20	15711-1	PLATE, KEEPER, BEARING	2	2	2	2
	21	7105	RIVET, POP, ALUMINUM	4	4	4	4
33		7272-1	CRANK HANDLE ASSEMBLY	1	1	1	1
	22	7107	CRANK ARM	1	1	1	1
	23	6333	HANDLE, CRANK, PLASTIC	1	1	1	1
	24	111-1	NUT, LOCK, 5/16-18 (LOW PROFILE)	1	1	1	1
	25	1621	BOLT, SHOULDER, 5/16-18	1	1	1	1
	26	432	BOLT, ¼-20 X 1-¾"	2	2	2	2
	27	9022	WASHER, FLAT, ½"	4	4	4	4
	28	7146	BOLT, HEX, ¼-20 X 1-½", GR. 5	1	1	1	1
	29	7145	SPACER	2	2	2	2
	30	7116	AXLE, PLUMBING, ½-14 COUPLING	-	1*	-	1*
	31	688	WASHER, FLAT, ¼" SAE	1	1	1	1
	32	10925-5	NAMEPLATE, PRODUCT, STD DECAL	1	1	1	1
	34	5153-200	HOSE, LP, 3/8" X 200', PVC	-	-	1***	-
	35	5154-225	HOSE, LP, 1/2" X 225', PVC	-	-	-	1***

*SHOWN FOR REFERENCE. INCLUDED WITH DRUM ASSEMBLY.

***INSTALL HOSE ON MODELS WITH "H" DESIGNATION ONLY.

(117H-3-200-DM & 117H-4-225-DM)

REVISION: K

ECO: 2922

DATE: 12/28/2011 NAME: J. KUSBEL