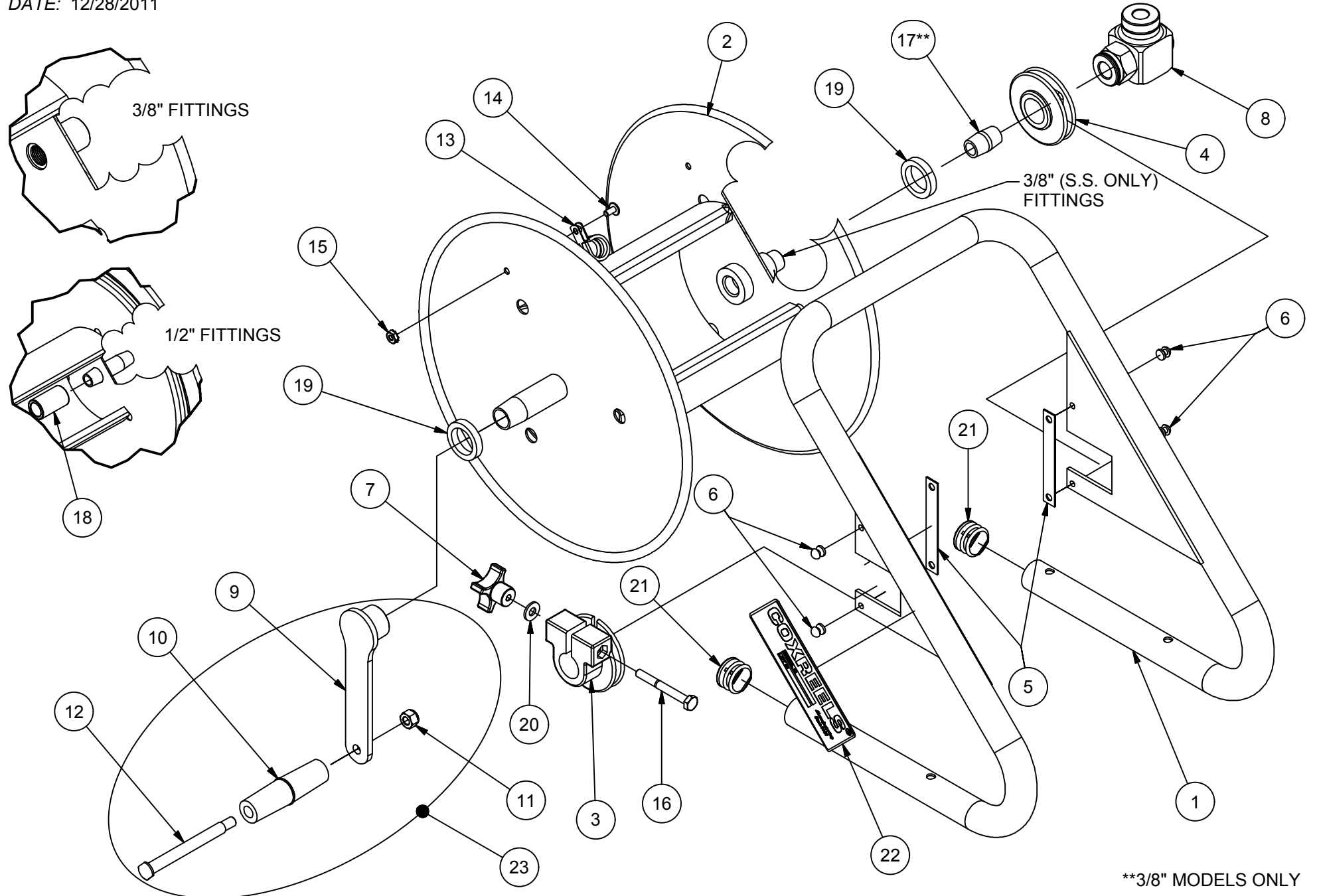


# EXP-40CM

REVISION: N  
ECO NO.: 2922  
BY: J. KUSBEL  
DATE: 12/28/2011

# COXREELS

## SERIES 112-CM/112H-CM & 117-CM/117H-CM



\*\*3/8" MODELS ONLY

## COMMON PARTS TO ALL CADDY CHALLENGER REELS

ASSY. ITEM NO.	DETAIL ITEM NO.	PART NO.	DESCRIPTION	112P-3-8-CM	112-3-100-CM	112-3-150-CM	117-4-225-CM	112H-3-100-CM	112H-3-150-CM	117H-4-225-CM
	1	7270-12-8	FRAME, "U", CHALLENGER	1	1	-	-	1	-	-
		7270-12-12.5	FRAME, "U", CHALLENGER	-	-	1	-	-	1	-
		7270-17-12.5	FRAME, "U", CHALLENGER	-	-	-	1	-	-	1
	2	7118-1-8	DRUM ASSY, 3/8" NPT, 5.5" X 8"W	-	1	-	-	1	-	-
		7118-1-8-SPEC	DRUM ASSY, 3/8" NPT, 5.5" X 8"W (SS PLUMBING)	1	-	-	-	-	-	-
		7118-1-12.5	DRUM ASSY, 3/8" NPT, 5.5" X 12.5"W	-	-	1	-	-	1	-
		7108-2-12.5	DRUM ASSY, 1/2" NPT, 5.5" X 12.5"W	-	-	-	1	-	-	1
	3	6329-1-1	BEARING, EPDM, .877" ID, CRANK SIDE	1	1	1	1	1	1	1
	4	6328-1-1	BEARING, EPDM, .877" ID, PLUMBING SIDE	1	1	1	1	1	1	1
	5	15711-1	PLATE, KEEPER, BEARING	2	2	2	2	2	2	2
	6	7105	RIVET, POP, ALUMINUM	4	4	4	4	4	4	4
	7	15719	KNOB, BLACK, PHENOLIC	1	1	1	1	1	1	1
	8	1935	SWIVEL, 3/8" NPT, CARBOXYLATED	-	1	1	-	1	1	-
433-FG-SS		SWIVEL, 3/8" NPT, NITRILE, FOOD GRADE, SS	1	-	-	-	-	-	-	
439		SWIVEL, 1/2" NPT, CARBOXYLATED	-	-	-	1	-	-	1	
23	7272-1	CRANK ASSEMBLY	1	1	1	1	1	1	1	
	7107	CRANK	1	1	1	1	1	1	1	
	6333	HANDLE, CRANK	1	1	1	1	1	1	1	
	111-1	NUT, LOCK, 5/16-18 (LOW PROFILE)	1	1	1	1	1	1	1	
	1621	SCREW, SHOULDER, 5/16-18	1	1	1	1	1	1	1	
13	381	HOSE CLAMP, #10	1	1	1	-	1	1	-	
	383	HOSE CLAMP, #12	-	-	-	1	-	-	1	
	245	SCREW, TRUSS HD, 10-32 X 3/8"	1	1	1	1	1	1	1	
	130	NUT, KEPS, 10-32	1	1	1	1	1	1	1	
	7146	BOLT, HEX, 1/4-20 X 2-1/4", GR 5	1	1	1	1	1	1	1	
	7115	NIPPLE, 3/8-18 X CLOSE, SCH 80	1	1	1	-	1	1	-	
	7116	AXLE, PLUMBING, 1/2-14 COUPLING	-	-	-	1*	-	-	1*	
	7145	SPACER	2	2	2	2	2	2	2	
	688	WASHER, FLAT, 1/4" SAE	1	1	1	1	1	1	1	
	7137	PLUG, TUBING (PLASTIC)	2	2	2	2	2	2	2	
10925-5	NAMEPLATE, PRODUCT, STD DECAL	1	1	1	1	1	1	1		
5153-100	HOSE, LP, 3/8" X 100', PVC	-	-	-	-	1***	-	-		
5153-150	HOSE, LP, 3/8" X 150', PVC	-	-	-	-	-	1***	-		
5154-225	HOSE, LP, 1/2" X 225', PVC	-	-	-	-	-	-	1***		

\*SHOWN FOR REFERENCE ONLY. INCLUDED WITH DRUM ASSEMBLY.

\*\*\*INSTALL HOSE ON MODELS WITH "H" DESIGNATION ONLY. (112H-3-100-CM, 112H-3-150-CM, 117H-4-225-CM)